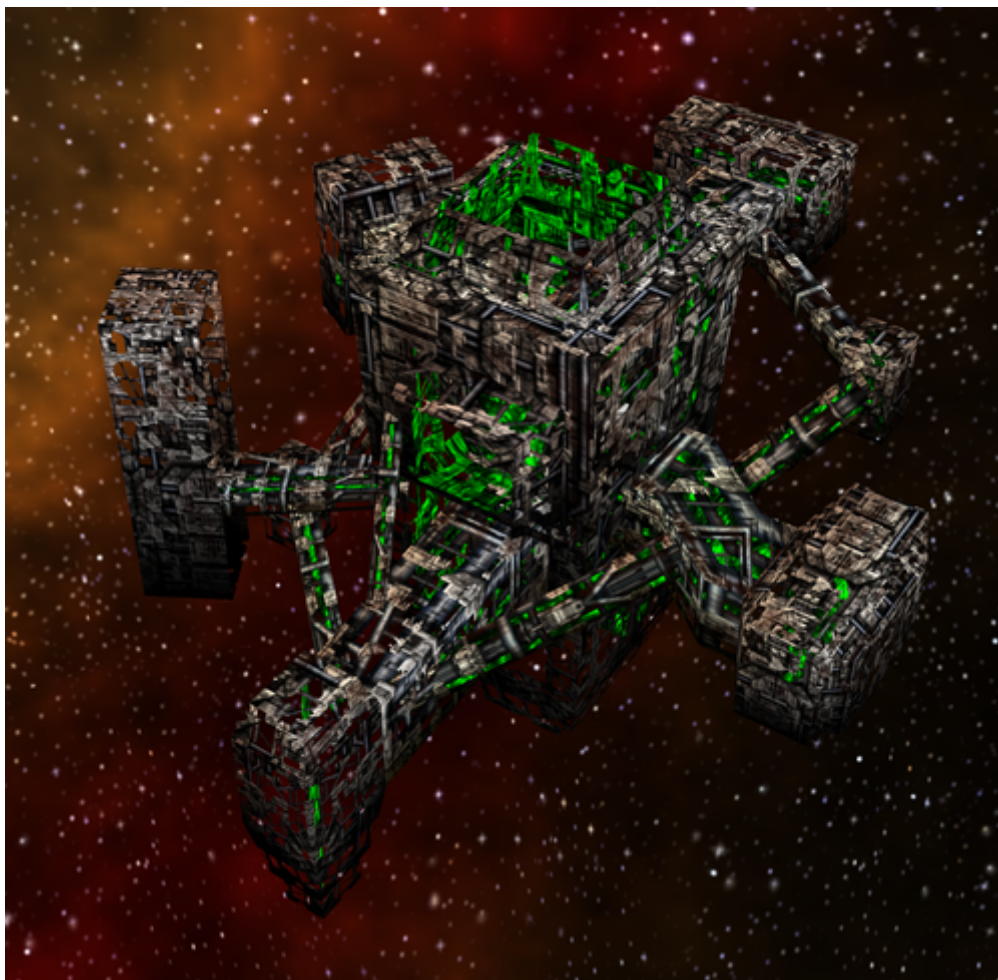


Armada 1 Nexus

The Nexus is the [Borg](#) pendant of a [Starbase](#). As such it provides an income of new crew and allows for expanding the supply limit. It's shield energy is considerable, but the damage output is comparable to that of a [Torpedo Turret](#).

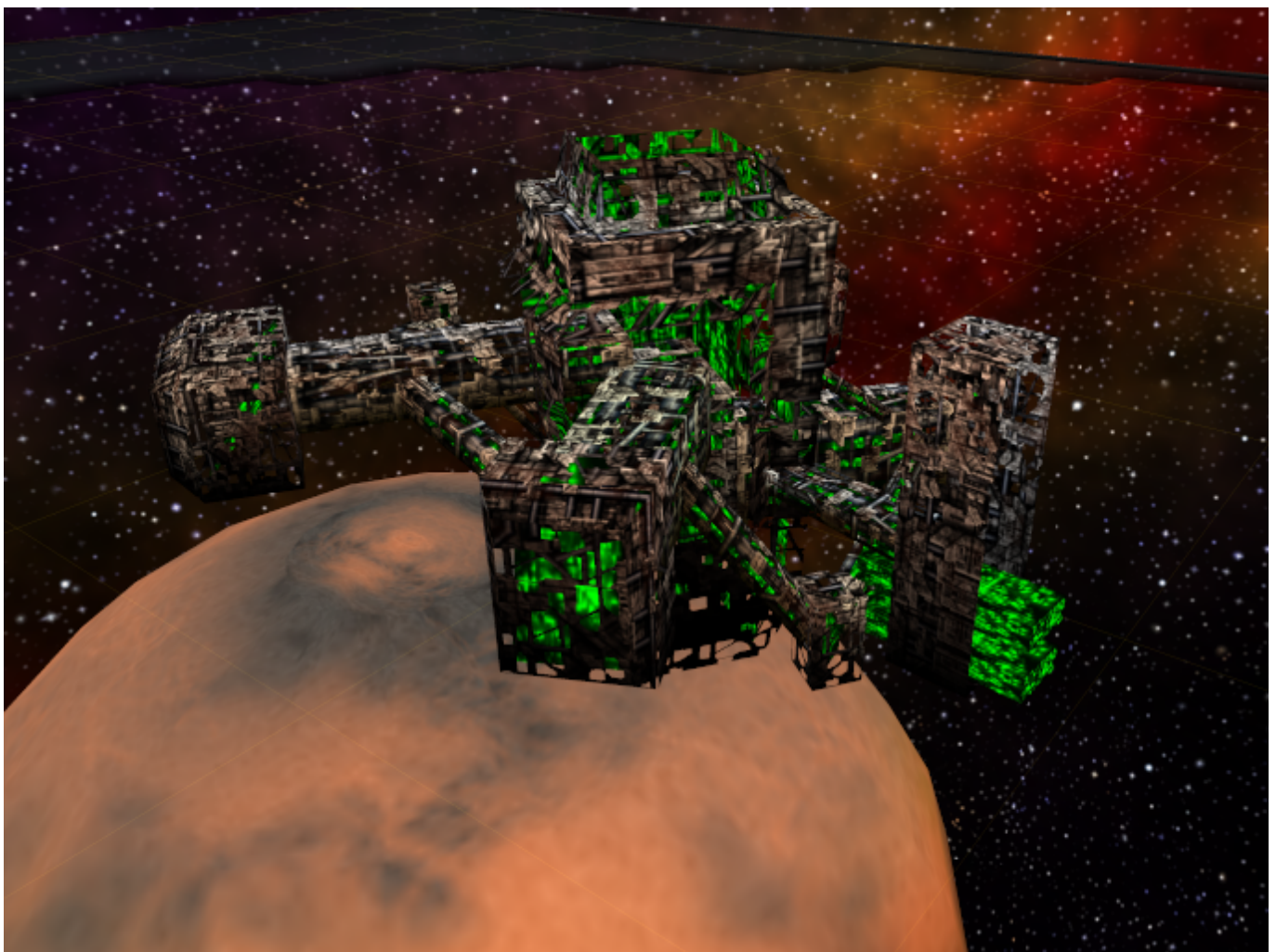


Statistical Values

Faction	Borg
Dilithium Cost	2000
Build Time	100 s
Crew Cost	800-1500
Supply Gain	20 (12/min)
Shield Energy	6000
Shield Restoration Rate	5/s
Weapon System	8 Starbase Pulse Cannons
Effective Damage Rate	35.6 - 42.7/s
Scanning Range	700

Production Capabilities

Item	Icon	Dilithium	Supply	Crew
Assembler		10/s	2.4/min	10/s
Dilithium Collector		10/s	0	2.5/s
Control Nodes Upgrade		10/s	-24/min	0.4/s



The control nodes upgrade increases supply by 20. It is depicted as green brick-like objects at the Nexus (you can see two of them on the lower right corner of the above picture). The Nexus has space for up to six upgrades. As a new Nexus already upgrades supply by 20, one Nexus can increase supply by up to 140.

[[Units](#)] [[Hero Ships](#)] [[Campaign Ships](#)] [[Ship Types](#)] [[Stations](#)] [[Station Types](#)] [[Special Weapons](#)] [[Factions](#)] [[Modding](#)]

[[Back to the Games Database](#)]

From:

<https://mwohlauer.d-n-s.name/wiki/> - mwohlauer.d-n-s.name / www.mobile-infanterie.de

Permanent link:

https://mwohlauer.d-n-s.name/wiki/doku.php?id=en:games:star_trek_armada_1:nexus

Last update: **2023-04-02-07-43**

