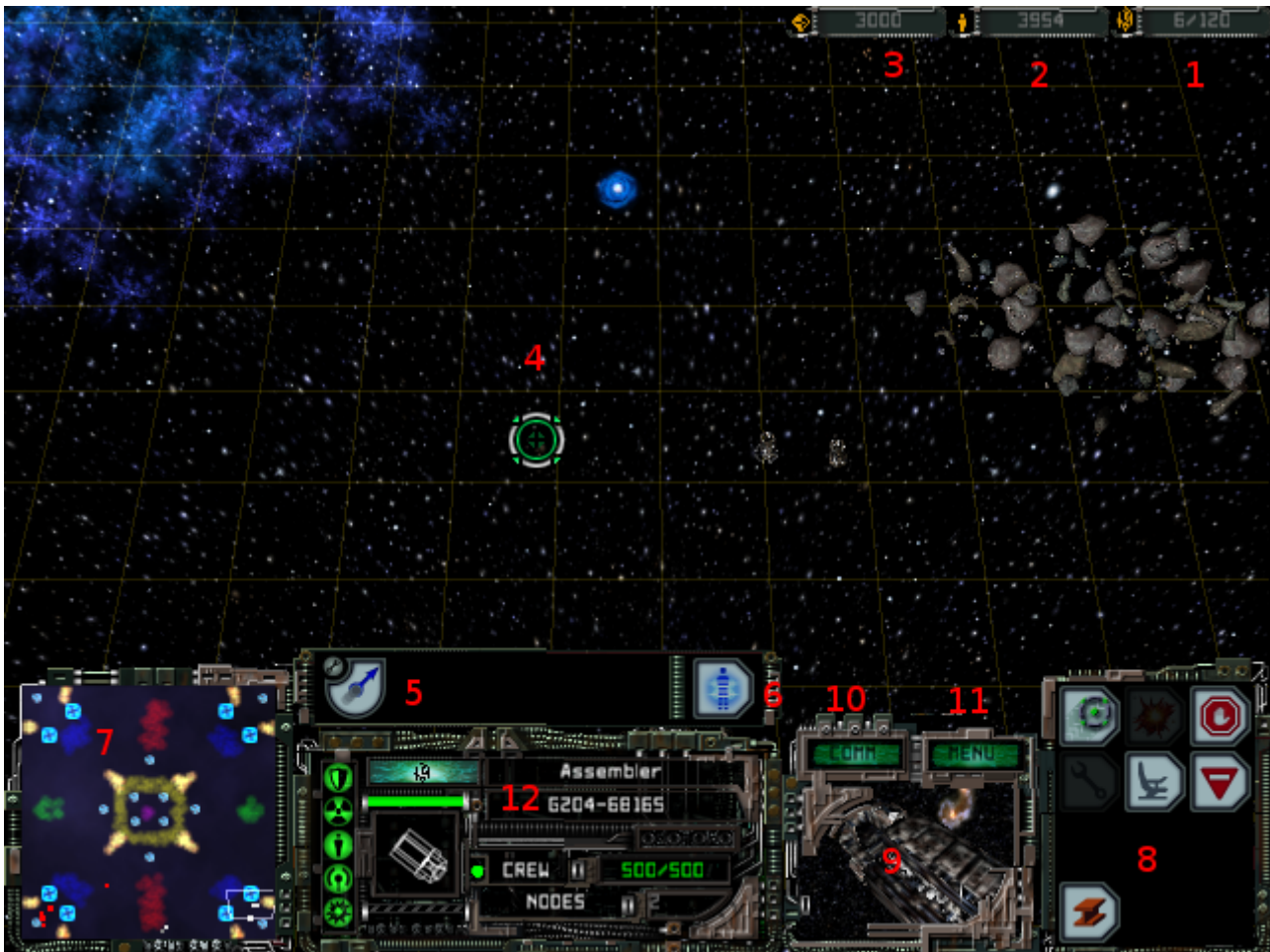


Armada 1 Game Interface

General Interface

Normal View

This is how the in-game interface looks like for the normal view:



It shows you the top-down view of the tactical map and is pretty much identical for all factions. Just the styling of the interface elements is a bit different. It presents a lot of functions and information sources:

1. [Supply](#), left number is the used amount, right number is the current maximum.
2. Available crew.
3. Available dilithium.
4. Cursor, used to pick units, sending them, and targeting their weapons, issuing commands and moving the view perspective.
5. Unit Button Bar, can show up to five different [special weapon](#) buttons. Their order also gives you the number of the F-key, activating it. So fourth from the left button can be activated by the F4 key. Only exception is the special weapon five (e.g. [super weapon](#) of the Romulans). F5 is reserved for cloaking. But due to the [Phoenix Bug](#) the cloak is not available for the [Phoenix](#).

6. Transport button, beams crew over to the target ship, five crewmen per second.
7. Strategic map, shows all visible units, map objects. When an event happens (e.g. attack by an opponent), a small circle around the position is drawn, getting smaller to guide the eyes to the place of the action. Can also be used, to click on, to get to the pointed position on the map. That goes also for sending ships. So there is a difference between right- and left-clicking, depending on how you configured the corresponding setting.
8. Command Button Area, can contain several function buttons and menu buttons, depending on what unit you currently use.
9. Cinematics Window, showing you different places where something is happening. When double clicking on it, you jump there, in the cinematics (=free look) mode. You can also toggle this with CTRL + y. Shows nothing, if you set that in the graphics settings, described above.
10. **COMM** menu button, opens the Communications menu
11. **MENU** menu button, opens the ingame main menu
12. Unit details: this part is generally black, when you have selected nothing. When selecting one unit, it shows you (from the top) the state of your shields, engines, life support, sensors and weapons system on the left hand side. If one of these five symbols flashes yellow, it means, that this system is temporarily offline (e.g. due to being hit by a special weapon or being inside a corresponding nebula). If the system is red, it means, it is damaged. Next you can see a mesh depiction of the unit. If some systems are damaged, it is also depicted there. Also some of the special weapons being effective is shown here (e.g. [Romulan Spy](#) and Klingon [Gravity Mines](#)). The green bar on the top side shows the shield energy. If only grey, shields are fully down. The striped bar below is the state of the current production/construction. The green-blueish bar above the shields bar is the factions bar. It shows the color of the team as well as the race of that faction. The nodes-area shown can also be the officers or Centurions, meaning the supply cost this unit has, see also upper right corner of the screen. **Crew** obviously shows you, how many crewmen are on board. Once this drops to zero, all shields and systems are taken offline. On the right upper part of this section you can also see the name of that unit. In multiplayer this means nothing. In some missions of the singleplayer this is important, as you might have to guard a certain building or unit, or have to get a certain unit or item to a specific position on the map.

Cinematic View

The cinematic view uses a unit as a reference point and shows the map from a spot near that unit. The interface looks like this:



The unit details are turned invisible, as well as the better part of the the cinematic window. You can toggle the normal view and cinematic view with either pressing y (or z on QUERTZ layouts) or double click the visible parts of the cinematic window.

COMM Menu



This menu serves multiple purposes. It shows you, what team a player belongs to, defines where chat messages should go and let's you give resources to other players.

On the right hand side, the **UNITS**, **DILITHIUM** and **CREW** buttons transfer the corresponding amount/units to the selected player. You select a player by clicking on the arrow right to his name.

Note: You cannot give another player one of your [construction ships](#).

The checkbox on the left of the **Team** badge defines, whether you want to chat with that player. You can also filter this with the buttons **ALL**, **ALLIES**, **ENEMIES** and **PRIVATE** on the bottom of the window.

The checkbox **Allied Victory** is important, if you do not play in fixed teams but in allies mode. If checked by all members of the remaining ally group, the game ends automatically with a win of that group, if only players from that group are still in the game.

Controls

Most functions can be used by the keyboard. Also most functions can also be used by using your mouse. However, some require one or the other or both. Many keyboard commands are mentioned, when hovering over a button with the mouse pointer. There is one flaw with that system when using another keyboard layout: Some units show you buttons that are not necessarily true. E.g. the yard build command is generally depicted as selectable with y. On a QWERTY layout that's correct. But when using a QWERTZ layout (e.g. German keyboard) then it is actually z (the same position on the keyboard, but in fact a different key).

Here is a selection of things you can do:

Keyboard Controls

General Keyboard Controls

Key(s)	Effect
CTRL + x	Opens the in-game main menu .
e	Selects every unit currently visible on the tactical map. If there are more than 8 units visible, the selection is arbitrary.
n	Selects the next unit currently visible on the tactical map.
g	Toggle grid on or off.
b	Either return from a sub menu from the right menu or open the build/research menu when having a station selected, that can either build units or research items.
y / z	Toggle cinematic view. On a QWERTZ layout it is z, on a QWERTY Layout it is y.

Changing the Interface Layout

One thing that is not immediately obvious is the fact that you can turn on and off different parts of the interface and can also re-arrange the different parts of the interface. By holding the ALT key you can drag the interface elements somewhere else. You can reset these changes to standard by entering CTRL + ALT + F9.

If you do not require a certain interface element, e.g. the cinematic window, you can turn them invisible by pressing CTRL + *Fnumber*. This also works with ALT instead of CTRL but sometimes when using ALT + F4 the game actually quits, instead of toggling the cinematic window on or off. When positioning the mouse pointer at the screen borders where a hidden element is positioned, it will appear temporarily. This only works, if the element is close enough to the screen borders itself. These are the keys for the different elements:

F-Key	Effect
1	Toggles Mini Map
2	Toggles Unit Details

F-Key	Effect
3	Toggles Unit Button Bar
4	Toggles Cinematic Window
5	Toggles Command Button Area
6	Opens COMM Menu
7	Toggles Resources Pane

Control Groups

You can assign up to eight units to a so-called control group. When pressing the digit key of a control-group, all units assigned to that group are selected. Here is a list of commands you can use with that feature:

Key(s)	Effect
CTRL + <i>Number</i>	Assigned the currently selected units to the control group with numer <i>number</i> . If no unit is selected, the control group will be emptied.
<i>Number</i>	Selects the units assigned to the control group with that number. If no units are assigned to that control group, anything currently selected will be de-selected.
2 x <i>Number</i> (in short succession)	Selects the units assigned to the control group with that number and jumps to the balance point of the group. When doing this too fast, it will not work. When doing this too slowly it will also not work.
F-Keys 1-5	Activates the special weapon slot (1 is the most left, 5 the most right)
t	Transports (beams) to an object.

Change Perspective in Normal View

When pressing one of the following keypad keys on the keyboard, the perspective will be changed, when in Normal View:

Key(s)	Effect
→	Move the section of the map shown on the tactical map to the right.
←	Move the section of the map shown on the tactical map to the left.
↑	Move the section of the map shown on the tactical map to the top.
↓	Move the section of the map shown on the tactical map to the bottom.
*	Turn the section of the map shown on the tactical map clock-wise.
/	Turn the section of the map shown on the tactical map counter-clock-wise.
+	Zooms in
-	Zooms out

Change Perspective in Cinematics View

Key(s)	Effect
→	Turn the section of the map shown on the tactical map clock-wise.
←	Turn the section of the map shown on the tactical map counter-clock-wise.
↑	Tilt the camera up.
↓	Tilt the camera down.
-	Increases camera altitude.
+	Decreases camera altitude.

Mouse Controls

General Mouse Controls

There are a variety of mouse commands you can issue.

- Left click on a [unit](#) or [station](#) : Selects the unit or station.
- Left click on a clickable button (not greyed out): uses this button. If the button changes the mouse pointer to another icon, it will be a two-part command, requiring another target to use the function on. If you use the same button again, the cursor will return to normal and the function aborted.
- Double-Left-Click on a unit: Selects up to eight units currently visible on the tactical map.
- Left Click on the strategic map: Move the view point to that location on the map. The camera movement is instant (jumping).
- Right Click on the strategic map: When currently issuing a [special weapon](#) command that requires a map target point, you can specify the target also on the strategic map, but only by right-clicking.
- Right-click when having a unit selected: Sends the unit to that position or attack that unit or station. If a group is selected, the units are spread around that point or attack the same object. Works also on the strategic map.
- Left Click Dragging the mouse pointer on the tactical map: Rectangle select: All units enclosed by the dragged rectangle will be selected. If no units but only stations are enclosed, the selection of the station is arbitrary. If there are more than 8 units enclosed, the selection will also be arbitrary.
- Left Click Dragging the mouse pointer on the strategic map: Moves the camera view point continuously over the map, tracking the position of the mouse pointer on the map.

View Mouse Control When in Normal View

- Moving mouse pointer to the screen's borders: Moves the section of the map shown on the tactical map into the direction of the border orientation.
- Right-click and drag: Moves the section of the map shown on the tactical map into the direction of the drag. Only does so, while actively moving the mouse pointer.
- Right-Left-click then dragging the mouse pointer: Zooms or turns the view perspective

View Mouse Control When in Cinematics View

- Moving mouse pointer to the screen's borders: Turns the camera view angle into the direction of the border orientation.
- Right-Left-click then dragging the mouse pointer: Zooms in or out.

Combined Controls

- SHIFT + selection of units: Adds the newly selected units to the current selection. If that would make more units than 8 for the selection, the units added to the selection is arbitrary.
- TAB + sending a unit: Sets waypoints for the currently selected units they will follow one after another.

[[Star Trek: Armada](#)] [[Game Play](#)] [[Technical Support](#)] [[Trivia](#)]

[[Units](#)] [[Hero Ships](#)] [[Campaign Ships](#)] [[Ship Types](#)] [[Stations](#)] [[Station Types](#)] [[Special Weapons](#)] [[Factions](#)] [[Modding](#)]

[[Back to the Games Database](#)]

From:

<https://www.mobile-infanterie.de/wiki/> - [mwohlauer.d-n-s.name](#) / www.mobile-infanterie.de

Permanent link:

https://www.mobile-infanterie.de/wiki/doku.php?id=en:games:star_trek_armada_1:game_interface&rev=1649272738

Last update: **2022-04-06-19-18**

